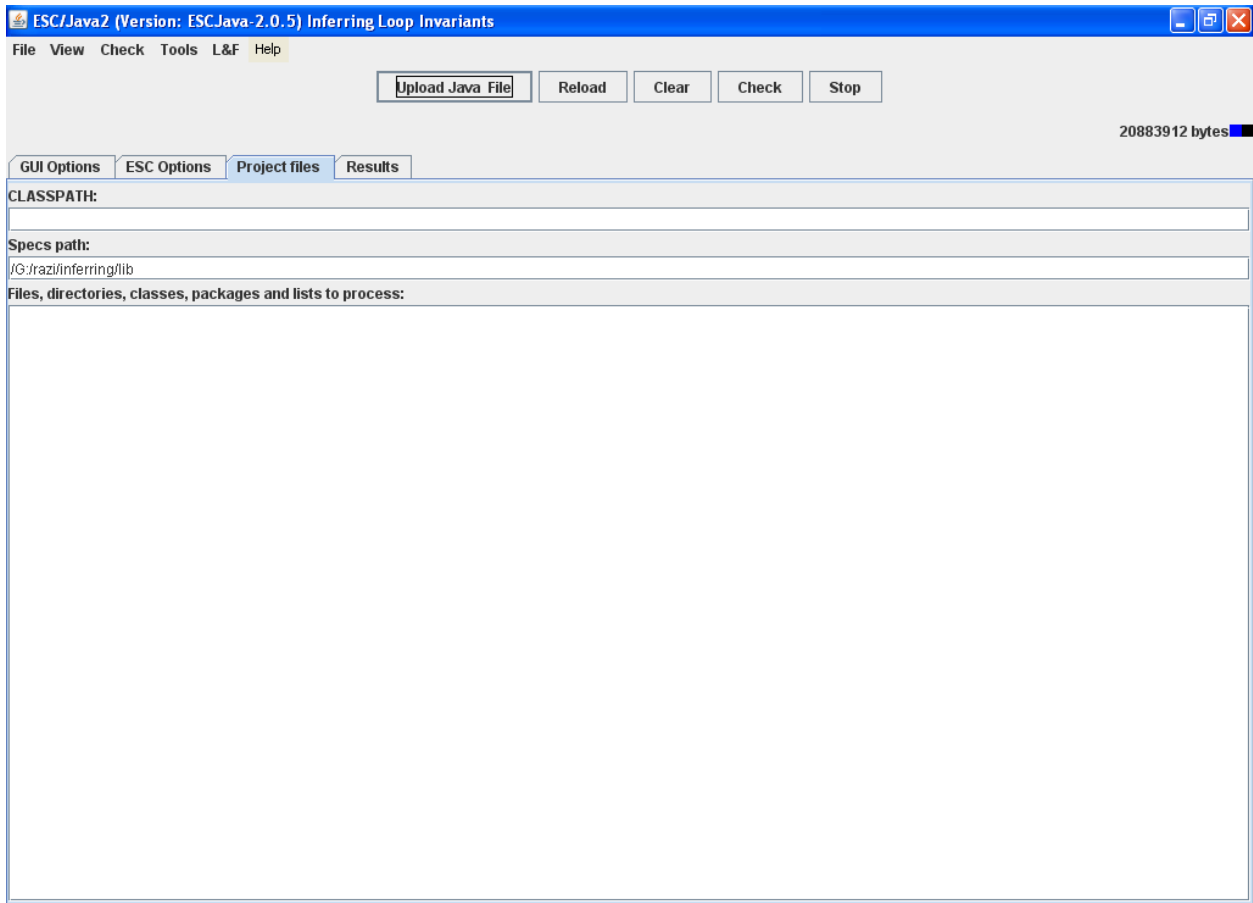
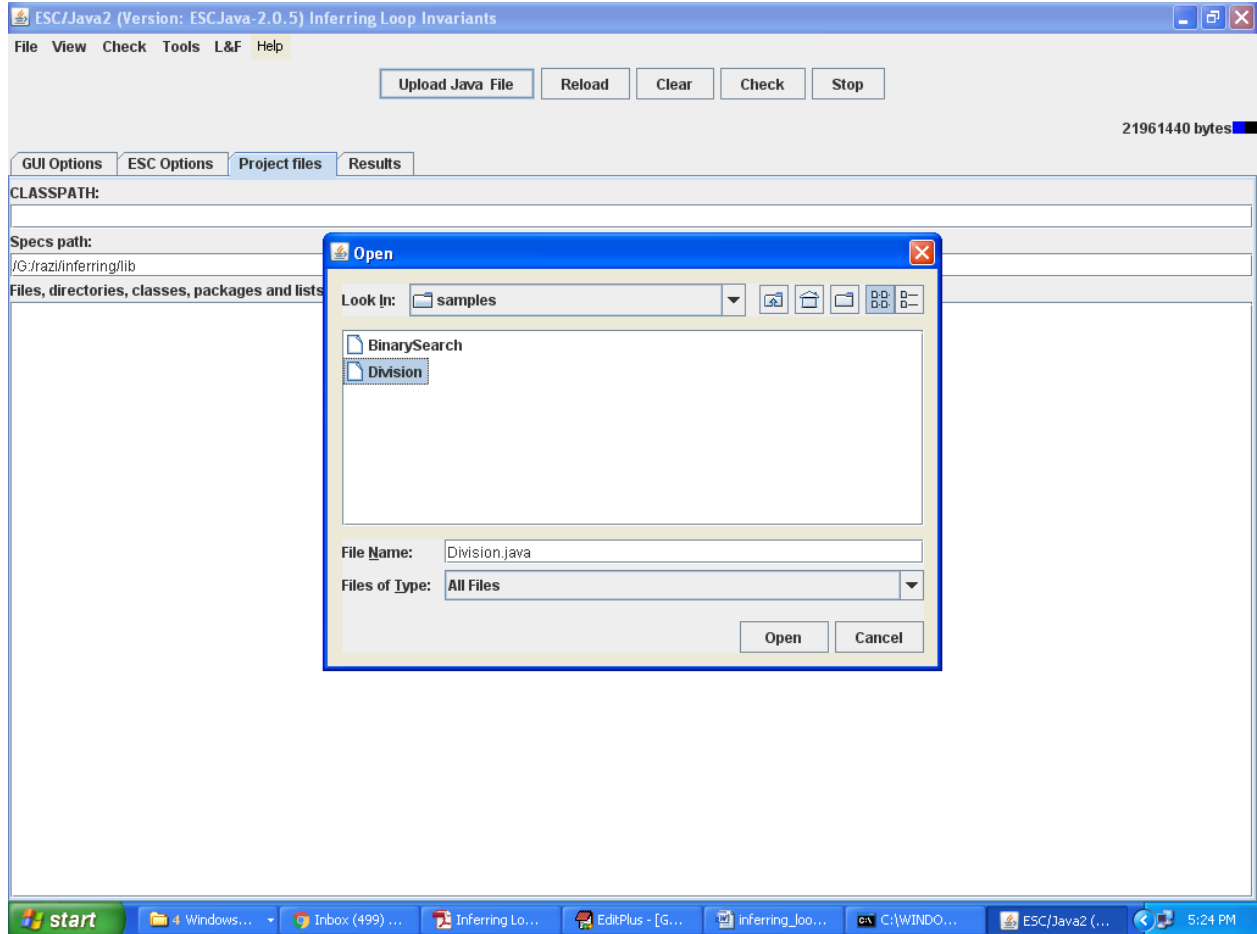
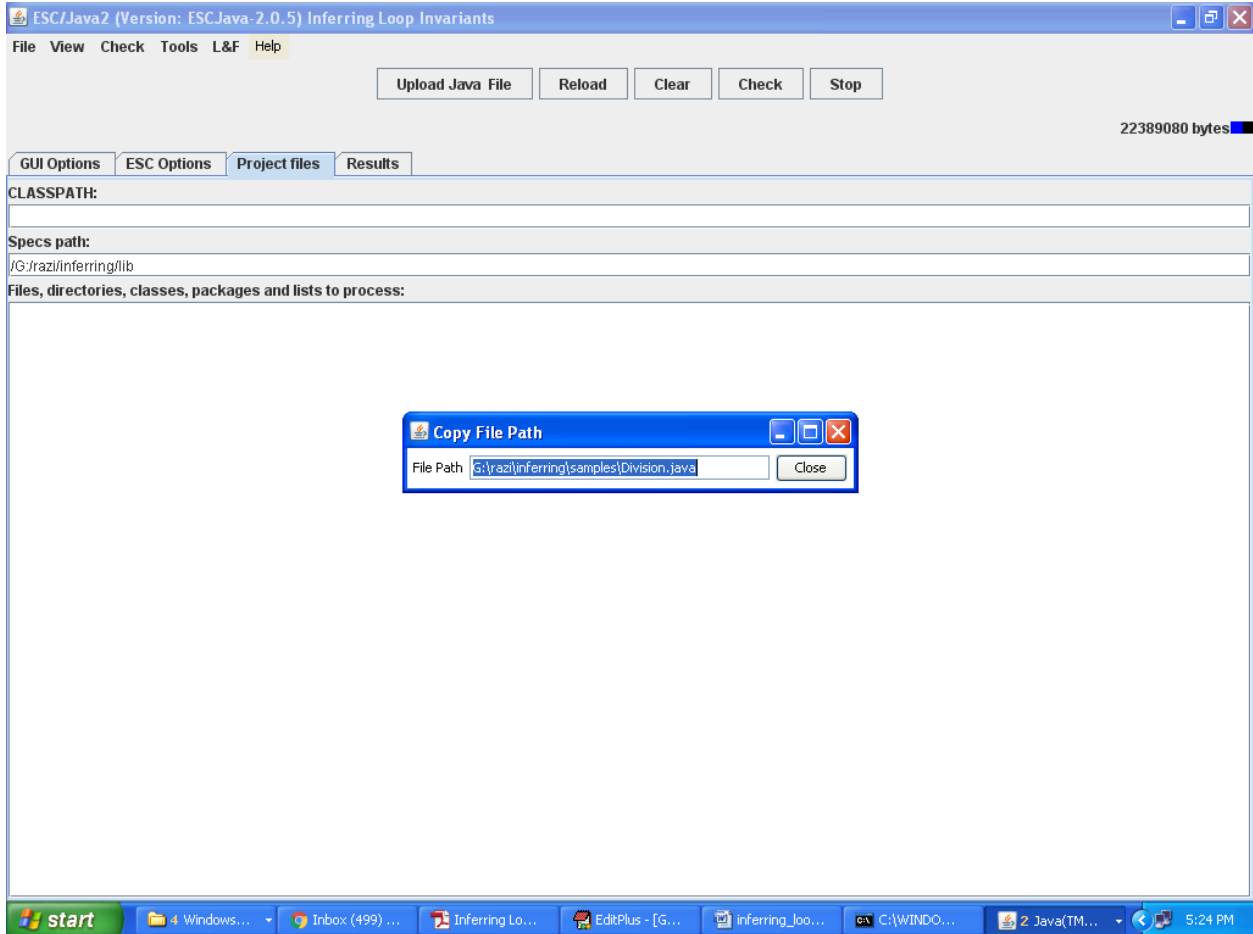


Output screens

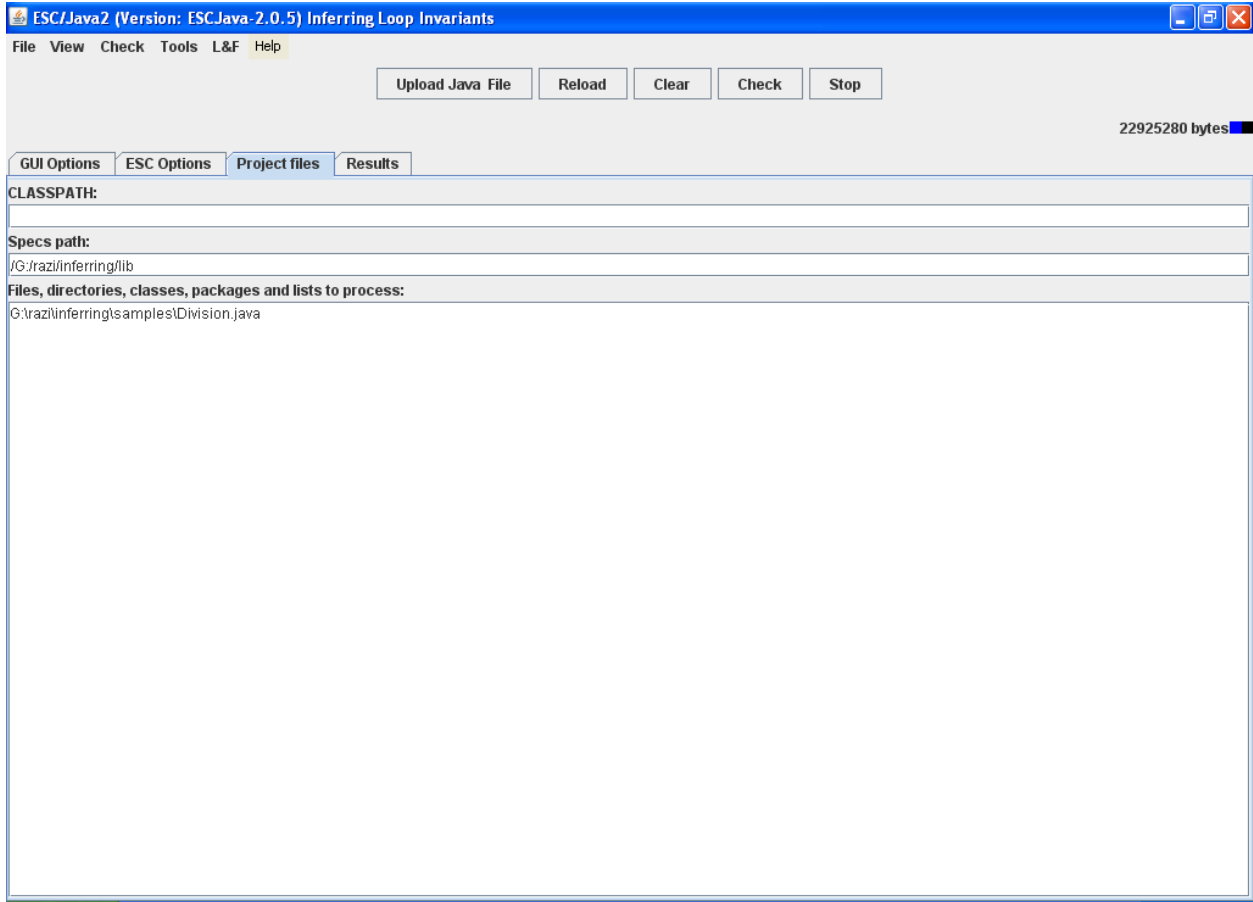


Now click on 'Upload Java File' button to upload program

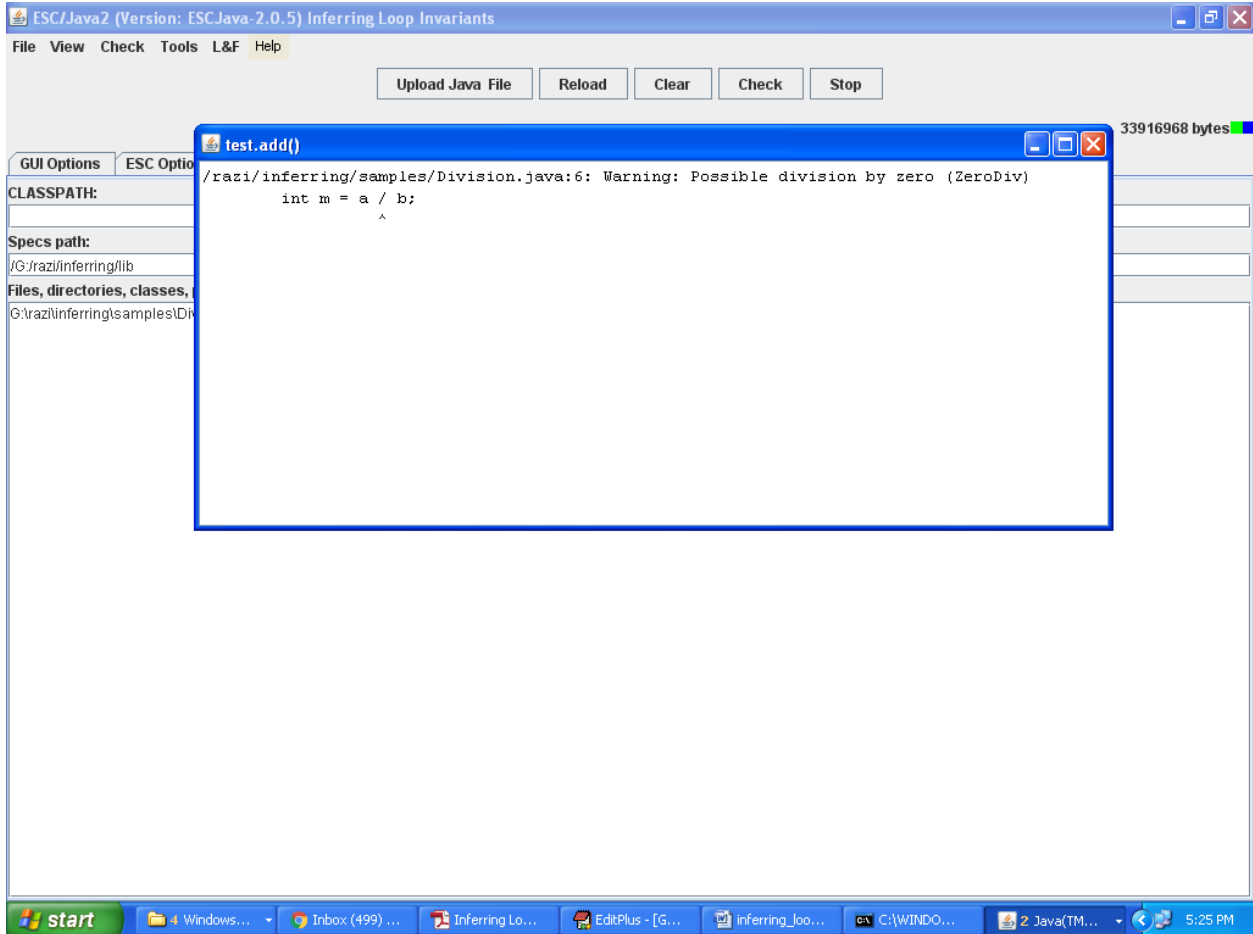




Now copy path from dialog box and paste in main window like below screen



After copying path to main window click on check button



Tool analyze program and display line at which problem may appear

Code of Division.java

```
Division - Notepad
File Edit Format View Help

public class test {

private static void add(){
    int a = 10;
    int b = 0;
    int m = a / b;
    int j = 9;
    for(int i=0; i<10; i++)
        j--;
}
}
```

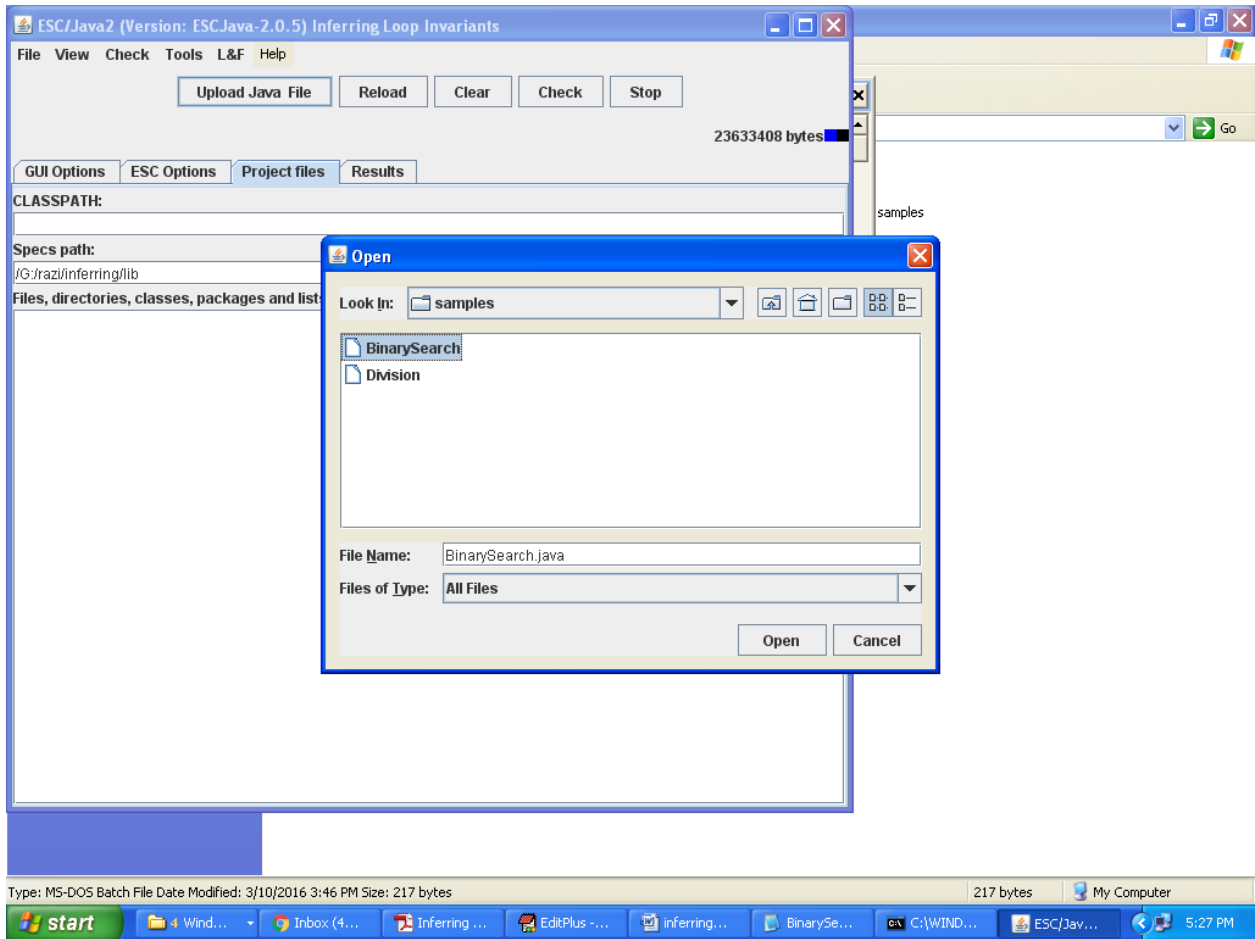
Now upload Binarysearch.java program which contains below code

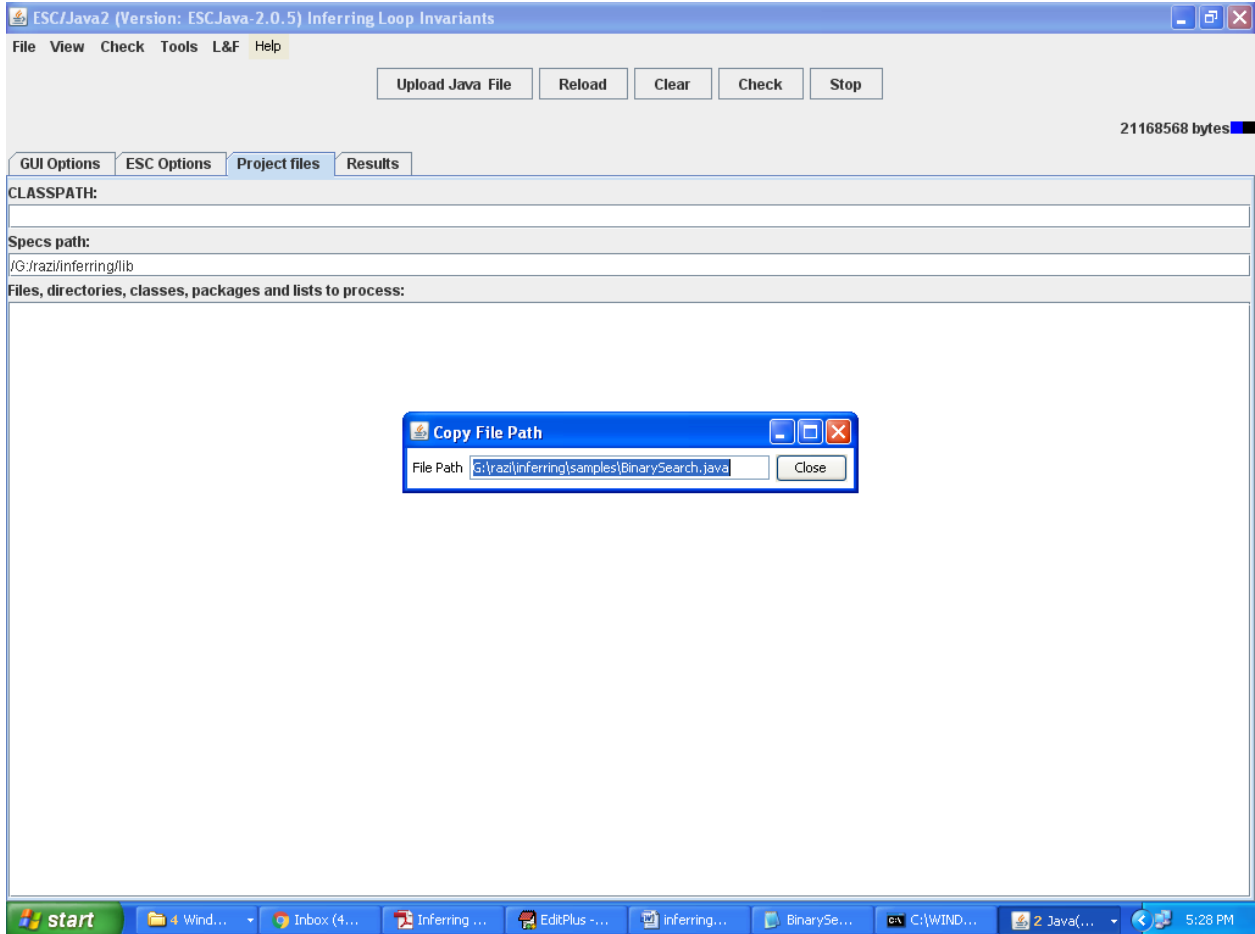
```
BinarySearch - Notepad
File Edit Format View Help

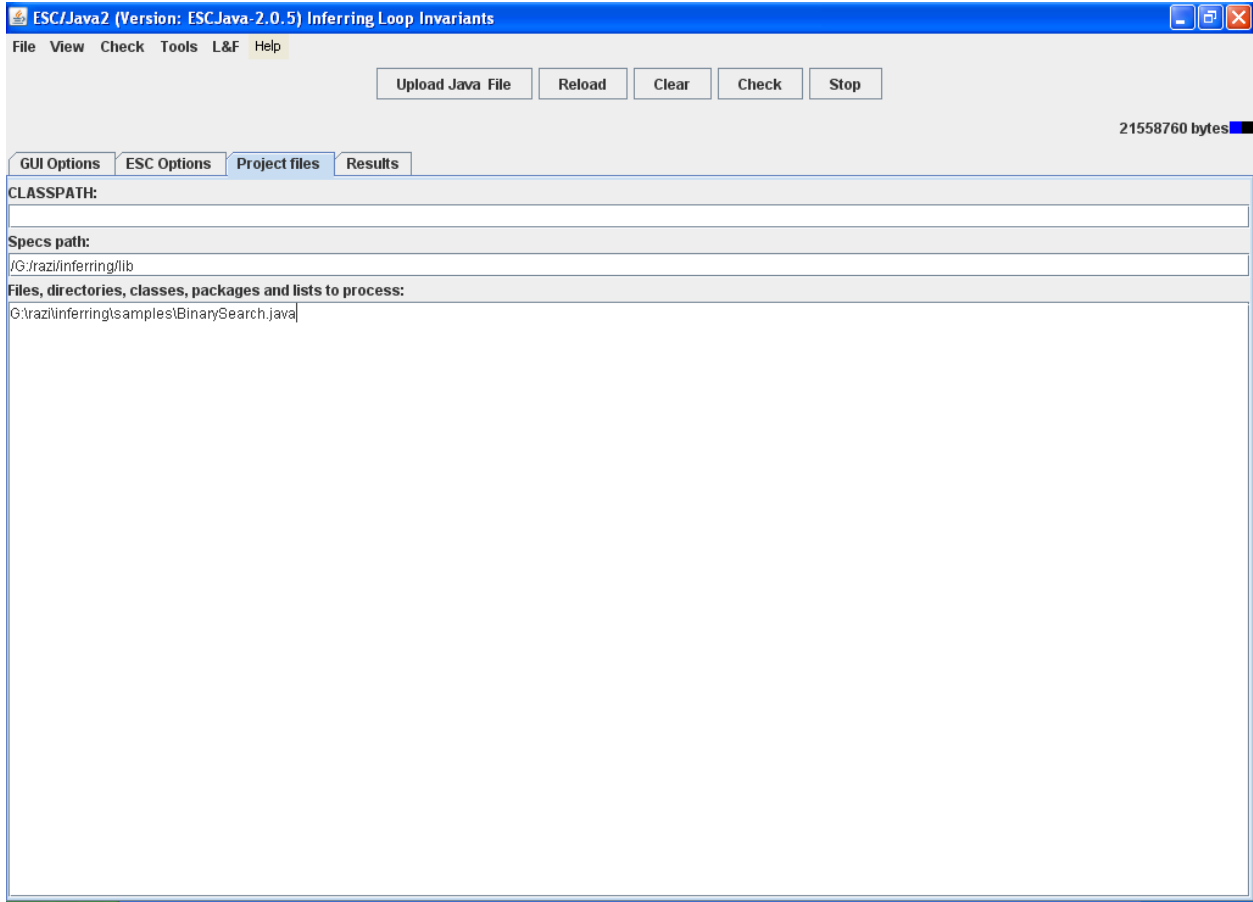
public class BinarySearch
{
    private static int binarySearch0(long[] a, int fromIndex, int toIndex, long key) {
        int low = fromIndex;
        int high = toIndex - 1;

        while (low <= high) {
            int mid = (low + high) >>> 1;
            long midVal = a[mid];

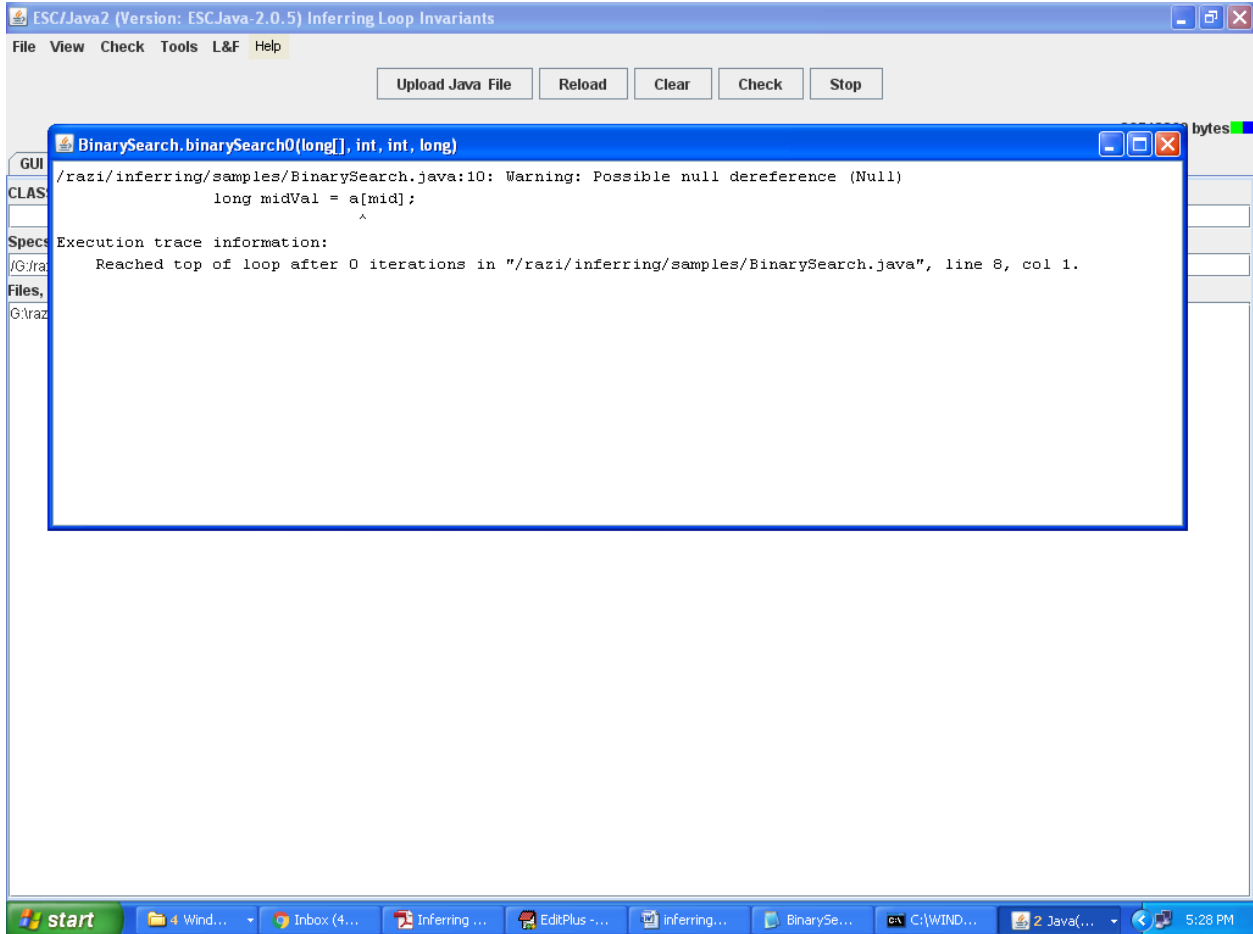
            if (midVal < key)
                low = mid + 1;
            else if (midVal > key)
                high = mid - 1;
            else
                return mid; // key found
        }
        return -(low + 1); // key not found.
    }
}
```





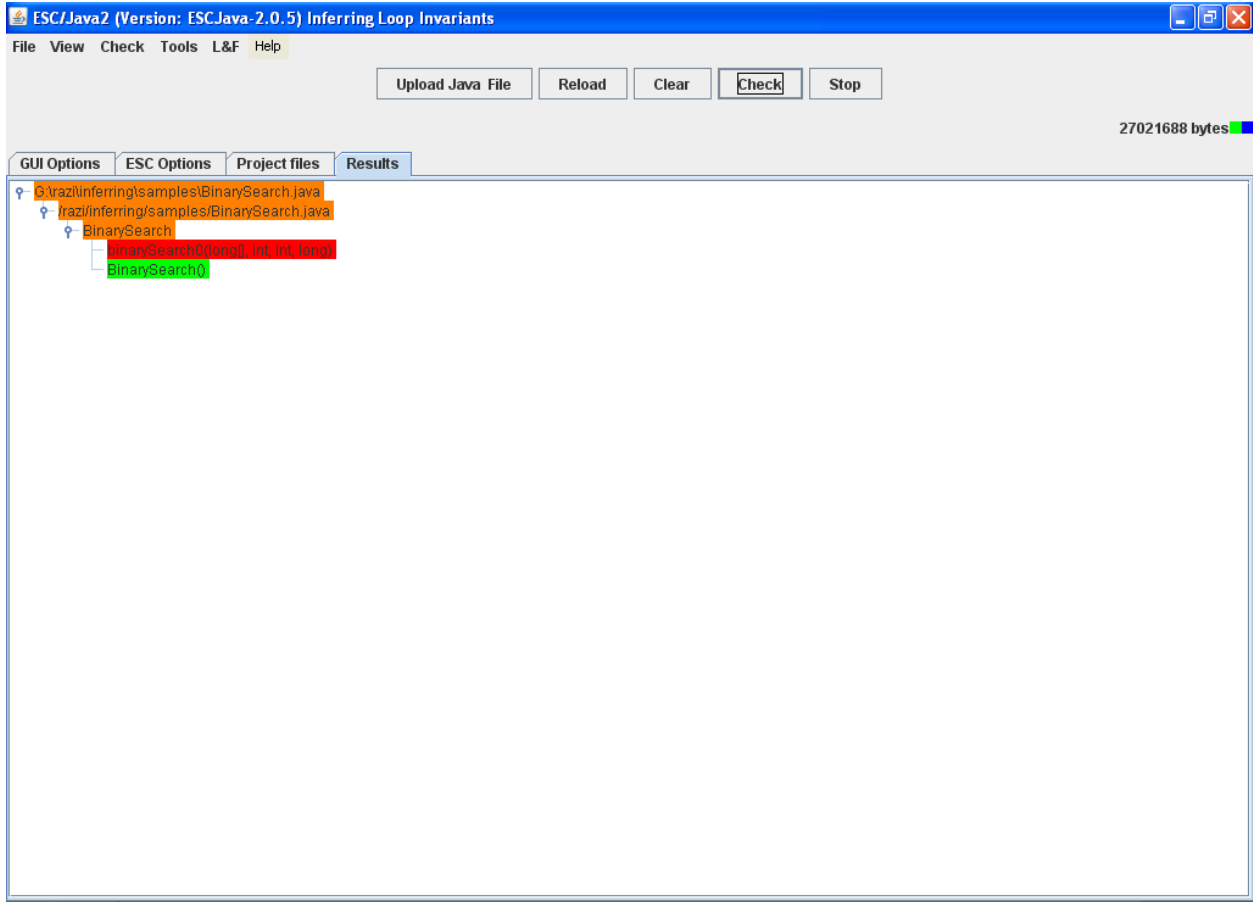


After copying path to main window click check button



After analyzing tool is giving above problems in code

Now click on 'Results' tab in main window to view tree



Above will show red color on those method which contains defects

Note : This tool will compile program and analyze it dynamically, for each upload close and restart tool to get proper results . This tool runs with jdk 1.5 or 1.6 if u don't have jdk1.6 I will send to u. Put this code either in c,d or e directory of ur machine don't put on desktop