

Above uploaded s1 dataset

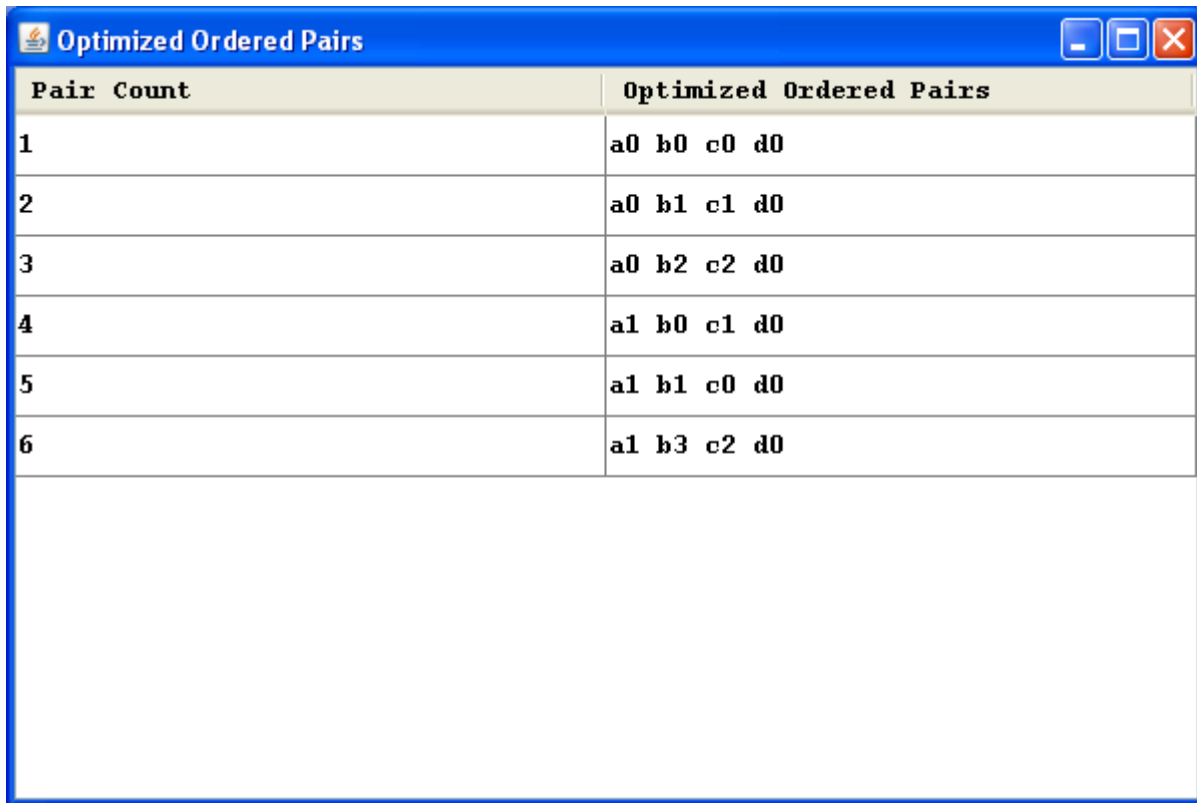
The screenshot shows a web application window titled "GAPTS" with the subtitle "GENERATION OF PAIRWISE TEST SETS USING A GENETIC ALGORITHM". The interface includes several buttons: "Upload Dataset", "Run Genetic Algorithm", "View Ordered Pairs", "View Optimized Ordered Pairs", and "View Results". Below these buttons is a table with two columns: "Parameters" and "Input Value".

Parameters	Input Value
p0	a0 , a1
p1	b0 , b1 , b2 , b3
p2	c0 , c1 , c2
p3	d0 , d1 , d3

A "Message" dialog box is displayed in the center of the application, containing an information icon, the text "File Uploaded", and an "OK" button.

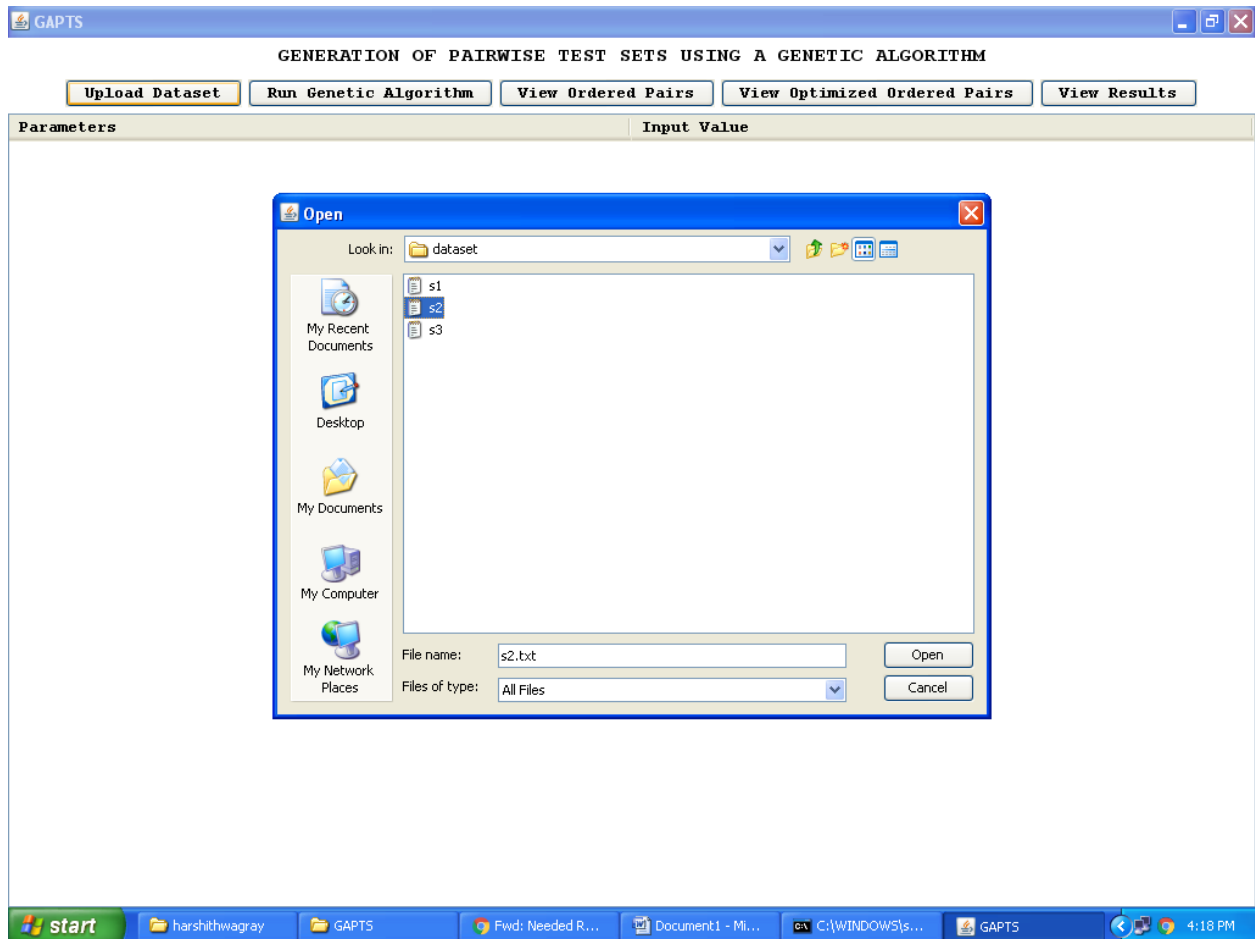
The Windows taskbar at the bottom shows the Start button, the user name "harshithwagray", and several open applications including "GAPTS", "Fwd: Needed R...", "C:\WINDOWS\...", "GAPTS", and "Document1 - Mi...". The system clock shows "4:16 PM".

In s1 I used 4 parameters and 12 values



Pair Count	Optimized Ordered Pairs
1	a0 b0 c0 d0
2	a0 b1 c1 d0
3	a0 b2 c2 d0
4	a1 b0 c1 d0
5	a1 b1 c0 d0
6	a1 b3 c2 d0

In above screen I got 6 pairs compare to 9 in the paper for s1 dataset



In above screen I am uploading s2 dataset

GAPTS [Minimize] [Maximize] [Close]

GENERATION OF PAIRWISE TEST SETS USING A GENETIC ALGORITHM

Parameters	Input Value
p0	a0 , a1 , a2
p1	b0 , b1 , b2
p2	c0 , c1 , c2
p3	d0 , d1 , d2
p4	e0 , e1 , e2
p5	f0 , f1 , f2
p6	g0 , g1 , g2
p7	h0 , h1 , h2
p8	i0 , i1 , i2
p9	j0 , j1 , j2
p10	k0 , k1 , k2
p11	l0 , l1 , l2
p12	m0 , m1 , m2

[Windows Taskbar: start | harshithwagray | GAPTS | Fwd: Needed R... | Document1 - Mi... | C:\WINDOWS\s... | GAPTS | 4:18 PM]

In above screen 13 parameters and 39 values

Pair Count	Optimized Ordered Pairs
1	a0 b0 c0
2	a0 c0 d0
3	a0 d0 e0
4	a0 e0 f0
5	a0 f0 g0
6	a0 g0 h0
7	a0 h0 i0
8	a0 i0 j0
9	a0 j0 k0
10	a0 k0 l0
11	a0 l0 m0

For s2 dataset I am getting 11 pairs compare to 15 in paper

S6 dataset

The screenshot shows the GAPTS application window titled "GENERATION OF PAIRWISE TEST SETS USING A GENETIC ALGORITHM". It features a menu bar with "Upload Dataset", "Run Genetic Algorithm", "View Ordered Pairs", "View Optimized Ordered Pairs", and "View Results". Below the menu is a table with 20 rows, each representing a parameter (p0 to p19) and its corresponding input values. A "Message" dialog box is overlaid on the table, displaying "File Uploaded" and an "OK" button. The Windows taskbar at the bottom shows the Start button and several open applications, including "harshithwa...", "GAPTS", "Fwd: Need...", "Document1 ...", "EditPlus - [G...", "C:\WINDO...", and "GAPTS". The system clock shows 4:21 PM.

Parameters	Input Value
p0	a0 , a1 , a2 , a3 , a4 , a5 , a6 , a7 , a8 , a9 , a10
p1	b0 , b1 , b2 , b3 , b4 , b5 , b6 , b7 , b8 , b9 , b10
p2	c0 , c1 , c2 , c3 , c4 , c5 , c6 , c7 , c8 , c9 , c10
p3	d0 , d1 , d2 , d3 , d4 , d5 , d6 , d7 , d8 , d9 , d10
p4	e0 , e1 , e2 , e3 , e4 , e5 , e6 , e7 , e8 , e9 , e10
p5	f0 , f1 , f2 , f3 , f4 , f5 , f6 , f7 , f8 , f9 , f10
p6	g0 , g1 , g2 , g3 , g4 , g5 , g6 , g7 , g8 , g9 , g10
p7	h0 , h1 , h2 , h3 , h4 , h5 , h6 , h7 , h8 , h9 , h10
p8	i0 , i1 , i2 , i3 , i4 , i5 , i6 , i7 , i8 , i9 , i10
p9	j0 , j1 , j2 , j3 , j4 , j5 , j6 , j7 , j8 , j9 , j10
p10	k0 , k1 , k2 , k3 , k4 , k5 , k6 , k7 , k8 , k9 , k10
p11	l0 , l1 , l2 , l3 , l4 , l5 , l6 , l7 , l8 , l9 , l10
p12	m0 , m1 , m2 , m3 , m4 , m5 , m6 , m7 , m8 , m9 , m10
p13	n0 , n1 , n2 , n3 , n4 , n5 , n6 , n7 , n8 , n9 , n10
p14	o0 , o1 , o2 , o3 , o4 , o5 , o6 , o7 , o8 , o9 , o10
p15	p0 , p1 , p2 , p3 , p4 , p5 , p6 , p7 , p8 , p9 , p10
p16	q0 , q1 , q2 , q3 , q4 , q5 , q6 , q7 , q8 , q9 , q10
p17	r0 , r1 , r2 , r3 , r4 , r5 , r6 , r7 , r8 , r9 , r10
p18	s0 , s1 , s2 , s3 , s4 , s5 , s6 , s7 , s8 , s9 , s10
p19	t0 , t1 , t2 , t3 , t4 , t5 , t6 , t7 , t8 , t9 , t10

20 parameters and 200 values in s6 dataset

For s6 dataset I am not getting any output because of large no of parameters and their values. Application running for long time